

Clinical Experience

... for ...

Theological Students

in the Service of

The Mentally Ill

at the

Elgin State Hospital



Under the Auspices of

**The Chicago Council for
Clinical Training**

Affiliated with the Council for Clinical Training, Inc.
(of Theological Students in the United
States and Canada).

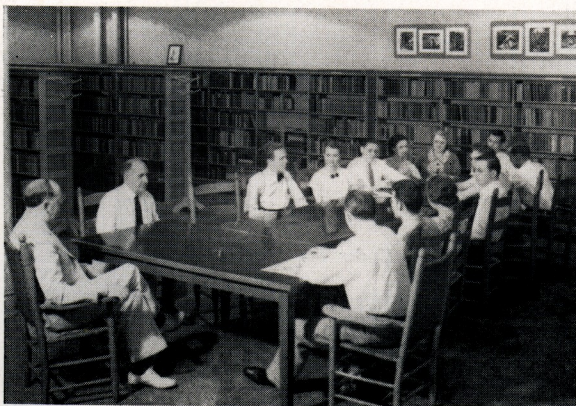
CHARLES F. READ, M.D., Superintendent

ANTON T. BOISEN, D.D., Theological Supervisor

1945

The Elgin State Hospital for the mentally ill is located on the southern edge of the city of Elgin about forty miles west and north from the Chicago Loop. It has about five thousand patients and about six hundred employes. Under the leadership of its distinguished superintendent, Dr. Charles F. Read, it has won recognition as one of the foremost institutions of its kind in the country.

The training center for theological students has been in operation since 1932. In that year Mr. Boisen, the inaugurator of the clinical training movement, transferred his work from Worcester to Elgin in order to make possible a closer relationship with the Chicago Theological Seminary, which from the beginning had sponsored his project. During the thirteen years which have followed one hundred and forty-three students have taken advantage of the opportunity thus afforded. These students have been drawn from fifteen different church bodies and from thirty different theological schools. They have been carefully selected from a large number of applicants and have rated high in ability and versatility. For twelve weeks



More Than 100 Hours Are Spent in Group Conference

in the summer these students participate in a program of service and of study. During the rest of the year this program is maintained on a somewhat reduced basis by the theological supervisor aided by students of promise who elect to remain for further experience.

The students serve as attendants on the wards, a team of three performing the duties of one attendant.

This ward duty provides a natural means of contact with patients and with employes and gives the students a valuable opportunity to serve and to observe. The students also assist in the conduct of a recreational program for the patients and they publish a mimeographed news-sheet. All these activities head up in the religious services, in which the students also participate. The students have had an important part in the development of a vested choir of patients which



The Patients' Choir at a Musical Vesper Service

from the beginning has been a vital factor in the religious services and has also had great therapeutic value for its members.

The program of instruction provides for more than one hundred hours in group conference based largely upon cases studied and reported by members of the group. About twenty of these conferences are held jointly with the St. Charles group. This is made possible by the fact that the St. Charles center is only twelve miles distant. Among the subjects of common interest to the two groups which are thus considered are the body-mind problem, scientific method in the study of human nature, types of mental illness, types of delinquency, mysticism and the pathological, religion and crisis experiences, religious beliefs and their significance, the principles and procedures of psychotherapy, the minister's distinctive task. In these joint conferences members of the staff at Elgin and at St. Charles have contributed generously, so also a number of distinguished visitors. The regular conferences are

supplemented by a two-day, mid-summer regional conference in which other centers and former students participate.

While thus far the regular introductory course has been given only in the summer, plans are under way by which the same intensive course will be offered also in other quarters.

At this center full maintenance is provided for the students and in consideration of the services rendered on the wards they are paid somewhat more than enough to cover the fifty dollar tuition fee. Students who remain as fellows in clinical religion receive grants-in-aid by individual arrangement.



The Diagnostic Building

THE ELGIN STATE HOSPITAL
DEDICATED BY THE STATE OF ILLINOIS
TO THE WELFARE OF ITS PEOPLE
FOR THEIR RELIEF AND RESTORATION
A PLACE OF HOPE
FOR THE HEALING OF BODY, MIND AND SPIRIT
WHERE MANY FIND HEALTH AND HAPPINESS AGAIN

